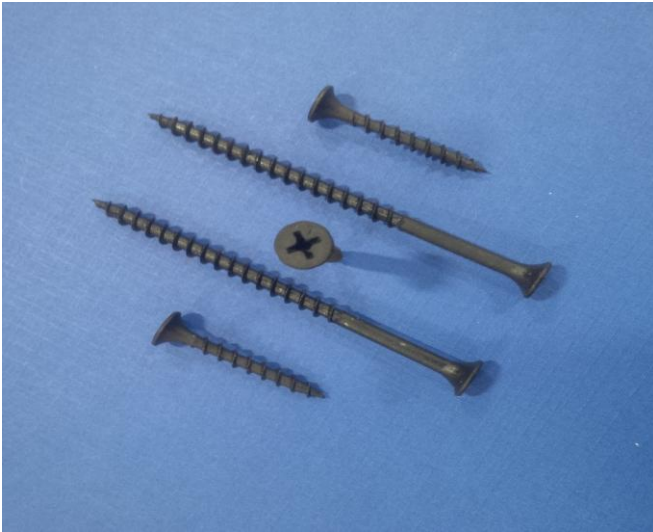


Phosphate coated

Drywall Screws: Philips bugle head screws with phosphate coating and piercing tip. Used for attaching drywall and foam board to wood or metal studs. Also some concrete framing applications.



Drywall Screws

thread type	sizes	lengths	finish	head type
Fine	#6	1, 1 ¼, 1 5/8	Phosphate	Philips, Bugle
Coarse	#6	1, 1 ¼, 1 5/8	Phosphate	Philips, Bugle
Coarse	#7	1 ½, 2, 2 ½	Phosphate	Philips, Bugle
Coarse	#8	2 ½, 3	Phosphate	Philips, Bugle
Coarse	#10	3, 3 ½, 4, 4 ½, 5, 5 ½, 6	Phosphate	Philips, Bugle

For use with Drywall, Sheetrock, Gypsum Board etc.